



SUMMER

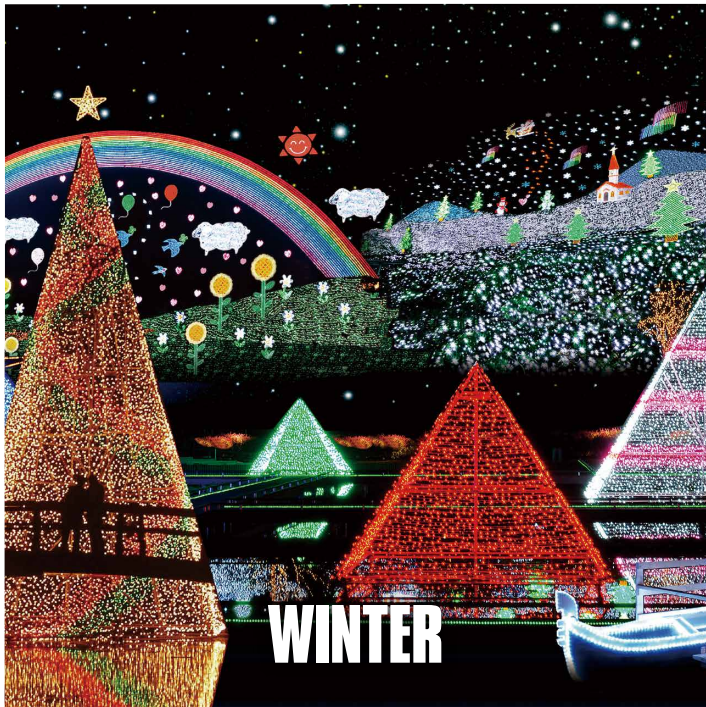
Japan's Top-ranked Fireworks Festival

With the history of over 100 years, the Ashikaga fireworks festival is one of the largest fireworks display in the northern Kanto region. The whopping 20,000 rounds and the "Niagara Falls" finale will keep your jaw dropped.

SEASONS ASHIKAGA

The Garden of Light and Flowers

Flowers are not always about spring and summer. During the winter, the Ashikaga Flower Park transforms itself to a dazzling wonderland of lights comprised of 3million LEDs, making it one of the finest light events in Japan.



WINTER

From TOKYO to ASHIKAGA in 70 MINUTES



Access.1 (by Train) 🚆

Haneda Airport ▶ Ashikagashi

Haneda Airport --- (Keihin Kyuko Line) --- Asakusa ---
(Tobu Line_Limited Express Ryomo) --- Ashikagashi

Access.2 (by Train) 🚆

Narita Airport ▶ Ashikagashi

Narita Airport --- (Keisei Line Limited Express) --- Nippoli --- (JR Jyoban Line)
--- Kita-Senju --- (Tobu Line_Ltd Express Ryomo) --- Ashikagashi

Access.3 (by Train) 🚆

Tokyo station. ▶ Ashikagashi

Tokyo station. --- (JR Keihin Tohoku Line) --- Ueno --- (Tokyo Metro_Hibiya Line)
--- Kita-Senju --- (Tobu Line_Limited Express Ryomo) --- Ashikagashi

Access.4 (by Car) 🚗

Tokyo (Asakusa) ▶ Ashikaga

Tokyo (Asakusa) --- Shuto Expressway (Central Circular Route / Kawaguchi Route)
--- Urawa toll booth --- Tohoku Expressway --- Iwafune Junction ---
Kita Kanto Expressway --- Ashikaga Interchange --- Ashikaga

For inquiries, please contact:

Ashikaga Tourism Association → Tel: 0284-43-3000

3-6-4 Taiheikikan, Isecho, Ashikagashi, Tochigi

URL: <http://www.ashikaga-kankou.jp/> Email: kankou@ashikaga-kankou.jp



HISTORY, CULTURE & FLOWER CITY

ASHIKAGA TRAVEL GUIDE



SPRING

Sensationally Stunning Cherry Blossom Landscape

Countless cherry blossoms greet you at many locations in our city. The row of cherry blossom trees along the Fukuro River is an excellent spot for viewing and enjoying traditional sakura festivals.

THE FOUR OF ASH

The Contrast of Red and Yellow

Enjoy leaf peeping at Orihime Park where over 1000 Momiji (Japanese maple) change their colors during this season. The contrast between the red and yellow leaves is stunning and breathtaking.



AUTUMN

FLOWERS



Wisteria

Ashikaga Flower Park

This flower paradise is the only Japanese location nominated in the dream destinations for 2014 by CNN travel. The park offers gorgeous flowers throughout the year, but you must not miss the spectacular wisterias that bloom during April to May. Revealing its beauty in pink, purple, white and yellow, visiting the Ashikaga Flower Park is a guarantee of a breathtaking experience.



Evergreen Azaleas

Orihime Park and Throughout the City

Tsutsuji (evergreen azaleas) is the official flower of Ashikaga and the blossoms are at their best in May. Although you can find them throughout the city, seeing the rows of Tsutsuji with the superb view of the city from the Orihime Park observatory is one of the must visit locations in our city.



HISTORY

National Treasure



Banna-ji (Banna Temple)

Founded by Ashikaga Yoshikane, a Japanese Samurai and the son of the founder of the famous Ashikaga clan, approximately 800 years ago. The moats fortifying the surroundings tells you that it was once a residence of a Samurai clan. The structure, which exhibits the Zenshuo architecture, which was an iconic building method at that time and remains as a precious cultural asset today.

The Oldest School in Japan



Japan Heritage Ashikaga Gakko

Francis Xavier, a missionary, described the Ashikaga Gakko in 1549, as Japan's largest and the most prominent academic institution in Bando, the area now known as the Kanto region. At its peak, over 3000 pupils gathered to study. Today, this historic site offers educational activities such as recitation of Analects to everyone.

Armored Samurai March



On the Eve of the New Spring "Setsubun"

Yoroi Toshikoshi (Armored March) is an event held every February 3 on Setsubun (the day of new spring). The event traces the tale of Yasuuji Ashikaga, who called 500 Bando-region warriors on horsebacks to line up at Banna Temple. Witnessing the people dressed in samurai armors marching the main streets of Ashikaga is an almost time traveling experience.

CULTURE



Kimono

Ashikaga Meisen

Around 1920, Ashikaga once dominated the textile industry by being the largest manufacturer of garments. During its prime, a type of kimono called Ashikaga Meisen gained popularity by applying modern designs and innovative colors to traditional kimonos. Today, the city offers kimono events that you can dress in Meisen and walk around the historical streets of Ashikaga.

World Class Porcelains

Kurita Museum

The Kurita Museum houses Imari and Nabeshima-style porcelain produced during the Edo period in the domain of Nabeshima in Hizen. The museum's collection of over 10,000 items is one of the largest of its kind in the world and it will make you cherish the beauty of creations Japanese culture has produced.



Lovers Sanctuary



Orihime Shrine

This beautiful red shrine, located on the hillside of Orihime Mountain has a history of over 1200 years. First built to enshrine the guardians of industries and match making, now it is a popular place among lovers to wish for their eternal love. You can also observe the panoramic view of the city from this shrine day and night.

FOOD

Soba

(Buckwheat Noodles)

Mountains connected to the distant Nikko mountain range are the source of high quality water, an essential key for making soba noodles. People in Ashikaga have valued and greatly supported skilled soba masters for a long time and made this city a great place for soba lovers.



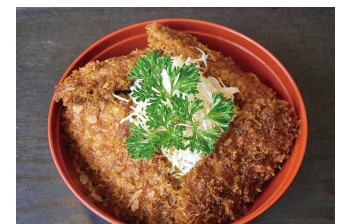
Wagashi

(Traditional Japanese Confections)

Ashikaga is a home to many famous Wagashi brands. Wagashi is almost an art rather than food because of its beautiful designs and color. The local special sweetened red bean paste confections are worth a try. There are many kinds of Wagashi and each of them will make you surprise.

Sauce

Companies in Ashikaga produces top quality sauces and many people grew up tasting them. Therefore, Ashikaga is a birthplace of many sauce flavored cheap eats such as yakisoba with potatoes, Ashikaga shumai and fried pork bowl. Please try them during your stay here.



Wine

COCO Farm & Winery is a famous vineyard that produces wine with grapes grown with love. They served their award-winning wine at a major banquet during a G8 summit in Japan. At the farm located in the northern area of Ashikaga, you can sign up for a tour of the winery and enjoy wine tasting after.

HISTORY, CULTURE
& FLOWER CITY

DISCOVER

"REAL ASHIKAGA"